

LINCOLN MKZ + HYBRID 2011



LINCOLN
MAKE YOUR MARK

THE FIRST HYBRID WITH LINCOLN LUXURY.



Luxury, technology and efficiency drive the all-new 2011 Lincoln MKZ Hybrid, the "**Most Fuel Efficient Luxury Sedan in Canada.**"¹ Powered by an award-winning 2.5L 4-cylinder Atkinson-cycle engine and electric traction motor, MKZ Hybrid achieves **up to 4.6L/100 km city**² – a full 1.0L/100 km better than its nearest competitor.³ That's good for a range of over 1,200 city kilometres on one tank of gas.⁴ On the highway, you'll enjoy 5.4L/100 km hwy. All in the comfort of **the quietest interior in its class**, with extraordinary standards like an acoustic-laminate windshield; Bridge of Weir™ leather-trimmed, **heated and cooled front seats**; and the Lincoln SYNC® voice-activated, in-vehicle connectivity system. Loaded. And ready to impress. The 2011 MKZ Hybrid.

¹Based on 2011 MKZ Hybrid Fuel Efficiency ratings and Natural Resources Canada 2010 estimated annual fuel cost rankings. Actual ratings will vary.

²Fuel consumption ratings based on Transport Canada approved test methods. Actual fuel consumption may vary. 4.6L/100 km city and 5.4 hwy. (61 mpg city/52 hwy.). ³Class is Luxury Midsize Hybrid Sedans. ⁴Actual fuel consumption may vary.

Lincoln MKZ Hybrid in Ingot Silver Metallic. Shown with available equipment.

LINCOLN MKZ + HYBRID 2011

lincolncanada.com





BLOSSOMS WITH RENEWABLE ENERGY.

The stunning focal point of the all-new 2011 MKZ Hybrid is its **SmartGauge™ with EcoGuide instrument cluster**. Displayed on 2 dramatic 4.3-in. LCD screens that flank a luminous centre speedometer, it actually helps coach you on how to drive most efficiently. Inspirational **leaves and apple blossoms** represent your **short- and long-term efficiency**. Get too heavy on the accelerator, your leaves fade in a flash. Blossoms are earned in 3 stages, over time. Exceptional beauty and **eco-friendly qualities** also come together in the walnut swirl and olive ash wood interior trim, which is sourced from well-managed forests and other rigorously controlled sources. And thanks to the **Regenerative Braking System**, MKZ Hybrid captures the kinetic energy that's released when you brake and uses it to recharge the battery pack. Now that's smart recycling.

MKZ Hybrid leather-trimmed seats in Dark Charcoal with Rust piping. Walnut swirl wood. Available equipment shown.

CONNECTS WITH YOUR FAVOURITE AMENITIES.

With the available **voice-activated Navigation System** (shown), your course is plotted as soon as you state your destination. A bird's-eye view includes landmarks for additional reference. And with nearly 10 gigabytes of hard drive storage for a **music jukebox and built-in photo gallery**, the system goes beyond functional to flat-out fun. You can access up to 2,400 of your favourite songs and view stored photos. You can even watch DVDs, in full THX® II Certified 5.1 Surround sound, when MKZ is parked. An intuitive, easy-to-read, **8-in. touch screen** pulls it all together with bold, colourful graphics. It's always at your fingertips, 24/7.



Standard **SIRIUS Satellite Radio**¹ lets you surf up to 120 channels including 100% commercial-free music, plus the best sports, news, talk and entertainment, all across Canada. You'll even get online access to SIRIUS with the 6-month prepaid subscription that's included with every 2011 Lincoln MKZ.

¹See your Ford of Canada Dealer or contact SIRIUS at 1-888-539-7474 for more information.



An available **THX II Certified 5.1 Surround Audio System** rewards every passenger in the 2011 Lincoln MKZ with rich home-theatre quality sound. Experience DVD-Audio discs in true surround sound and listen to CDs, MP3 files and SIRIUS® Satellite Radio like never before. In this acoustically engineered cabin, bass notes thump, drum beats pop, and vocals are presented with astounding clarity. Fourteen strategically aimed and focused speakers ensure a high-impact listening event.



TEAMS LOGIC WITH UNCOMPROMISING LUXURY.



The standard **MyKey™ owner controls feature** lets you program your ignition keys. Use it to set the low-fuel warning to chime earlier, to prohibit the shutoff of key collision-avoidance features like AdvanceTrac® ESC (electronic stability control), or to remind other drivers to buckle up or travel at appropriate speeds.

Sumptuous Bridge of Weir™ leather trims the heated and cooled, 10-way power front seats of Lincoln MKZ. Genuine walnut swirl or olive ash wood enriches the instrument panel, door-trim panels and leather-wrapped steering wheel. It's world-class luxury, with a logical side. The standard **Lincoln SYNC® voice-activated, in-vehicle connectivity system** provides hands-free calling, plays your music and so much more – with the touch of a button and simple voice commands¹ And SYNC with class-exclusive² **911 Assist™** can make an emergency call from your mobile phone if any airbag deploys.³ Unlike other systems that send you to a call centre first, SYNC connects you directly to a 911 operator. You talk. SYNC listens.™

¹Some mobile phones and some digital media players may not be fully compatible. Driving while distracted can result in loss of vehicle control. Only use mobile phones and other devices, even with voice commands, when it is safe to do so. ²Class is Luxury Midsize Sedans. ³The vehicle's electrical system (including the battery), the wireless service provider's signal and a connected mobile phone must all be available and operating for 911 Assist to function properly. These systems may become damaged in a crash. The paired mobile phone must be connected to SYNC, and the 911 feature enabled, in order for 911 to be dialed.

Bridge of Weir leather-trimmed seats in Dark Charcoal with Rust piping. Walnut swirl wood. Available equipment shown.

LINCOLN MKZ + HYBRID 2011

lincolncanada.com





MOVES WITH UNBRIDLED ENTHUSIASM.

The **3.5L Duratec® V6 engine** in Lincoln MKZ rewards your passion with a great deal of enthusiasm of its own. Like 263 spirited horsepower. Along with 7.4L/100 km hwy.¹ Its standard **6-speed SelectShift Automatic® transmission** pulls double duty as well, supplying the freedom of a “manual mode” – if you prefer handling upshifts and downshifts for yourself – with the convenience of an automatic.

With sophisticated sensors to measure oversteer and yaw, standard **AdvanceTrac® ESC (electronic stability control)** with brake-actuated traction control helps improve management of slippery surfaces like snowy, muddy, wet or gravel roads. Constantly monitoring vehicle speed, throttle position and steering wheel angle, AdvanceTrac ESC automatically modulates engine power or selectively applies the brakes if it senses wheel slip or loss of traction – helping you stay on your intended path.²

To help increase traction on all road surfaces, choose available **intelligent all-wheel drive (AWD)**. As rain turns formerly smooth blacktop very slick, intelligent AWD reacts instantly, distributing torque to the wheels with the best grip. Between front and rear axles and side to side on each axle, torque moves automatically to maintain traction. In fact, even if traction is reduced to one wheel, intelligent AWD sends most torque there to keep Lincoln MKZ moving.

¹11.7L/100 km city and 7.4L/100 km hwy. (24 mpg city/38 hwy.), MKZ FWD. Fuel consumption ratings based on Transport Canada approved test methods. Actual fuel consumption may vary. ²Remember that even advanced technology cannot overcome the laws of physics. It's always possible to lose control of a vehicle due to inappropriate driver input for the conditions.

LINCOLN MKZ + HYBRID 2011

lincolncanada.com


LINCOLN
MAKE YOUR MARK



Lincoln MKZ in Ingot Silver Metallic with available equipment, including the **Sport Appearance Package**: Chrome grille with black bars, darkened headlamps, 18-in. polished aluminum wheels, body-colour door handles, sport-tuned suspension, aluminum interior trim, unique floor mats with MKZ badge, and Bridge of Weir™ Dark Charcoal leather-trimmed seats with Cashmere-coloured piping.

LINCOLN MKZ + HYBRID 2011

lincolncanada.com



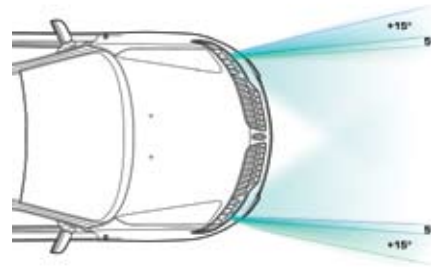
LINCOLN
MAKE YOUR MARK



In vehicles equipped with the available Vision Package, the image from the **rear view camera** is displayed on the vibrant 8-in. screen of the Navigation System whenever Lincoln MKZ is put in Reverse. Integrated sight lines even give you a handy reference point as you're backing up.



Specific structural areas of the **MKZ safety cage** are strengthened against intrusion. Others are designed to absorb crash energy and channel it away from occupants. And inside, occupant-protection systems help keep you and your passengers safe. Other standard safety features include 6 airbags, the SOS Post-Crash Alert System™ and the Tire Pressure Monitoring System.

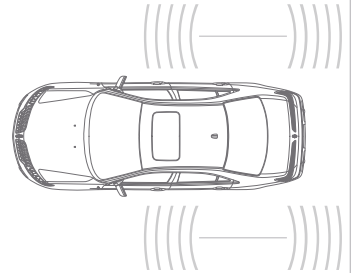


Available **adaptive HID headlamps** are truly illuminating. Based on steering wheel angle and vehicle speed, motorized low-beam projector headlamps turn in the same direction as the vehicle – rotating 5° inboard and 15° outboard. This simple swivel action helps make more of the roadway visible around a curve.

Standard **ambient lighting** features 7 different colour choices to give your MKZ interior an inviting glow. Coloured light illuminates from the front door handles, front sill plates, within the front cupholders, and over the front and rear footwells.



When radar waves from the available **BLIS® (Blind Spot Information System)** with cross-traffic alert detect a vehicle in one of your blind spot zones, a warning light illuminates in your sideview mirror, alerting you to stay where you are until it's clear. **Cross-traffic alert** also uses radar to watch for approaching traffic when slowly backing out of a parking spot. When it detects vehicles approaching from either side up to 14 metres away (45 feet, about 5 parking spaces), the system sends an audible warning, a message centre alert, and a visual display in the corresponding mirror.



Swaths of walnut swirl wood trim elevate the available **Executive Package**, covering the full centre console, the instrument and door-trim panels, and part of the steering wheel. Premium floor mats and Dark Charcoal (shown) or Cashmere-coloured leather-trimmed seating surfaces are also in this package.



STANDARD LUXURY FEATURES:

ENGINE

3.5L DOHC 24-valve Duratec® aluminum V6
263 hp @ 6,250 rpm/249 lb.-ft. of torque @ 4,500 rpm
Intake variable cam timing (iVCT) and electronic throttle control (ETC)
10.3:1 compression ratio
Sequential multiport electronic fuel injection
Stainless steel exhaust system with dual chrome exhaust tips
Estimated Fuel Consumption¹
FWD 11.7L/100 km city and 7.4L/100 km hwy. (24 mpg city/38 hwy.)
AWD 12.6L/100 km city and 8.3L/100 km hwy. (22 mpg city/34 hwy.)

DRIVETRAIN

6-speed SelectShift Automatic® transmission
Front-wheel drive (FWD)

WHEELS | TIRES

17-in. 9-spoke machined aluminum wheels with painted pockets
P225/50R17 all-season V-rated performance tires

BRAKES

Anti-Lock Brake System (ABS)
Electronic brakeforce distribution (EBD)
Power 4-wheel disc brakes with ventilated rotors

SUSPENSION | STEERING

24-mm front and 17-mm rear stabilizer bars
Independent short- and long-arm front suspension with coil springs over shocks
Multilink independent rear suspension
Power rack-and-pinion steering

EXTERIOR

Autolamp automatic headlamps on/off feature with delay
Chrome door handles
Easy Fuel® capless fuel filler
Fog lamps with black bezels
Light-emitting diode (LED) tail lamps
Lincoln split-wing grille
Power, heated, chrome-capped sideview mirrors with integrated blind spot mirrors, security approach lamps, memory and auto-dimming driver's side
Quad-beam halogen headlamps
Rain-sensing windshield wipers
Rear-window defroster
Reverse Sensing System
Solar-tinted glass

INSTRUMENTATION | DRIVER CONTROLS

Auto-dimming rearview mirror
Power windows with global open and one-touch-open/-close for driver and front passenger
Steering wheel-mounted cruise control, media controls and secondary audio controls
Universal garage door opener
White LED-backlit instrument cluster with speedometer, tachometer, fuel level gauge, coolant temperature gauge and message centre

SEATING

5-passenger seating
10-way power driver's seat with power lumbar and memory feature
10-way power front-passenger seat with power lumbar
Bridge of Weir™ leather-trimmed seating
Heated and cooled driver and front-passenger seats
60/40 split-fold rear seat with centre armrest and 2 cupholders

INTERIOR

Accessory delay for power features
Ambient lighting
Cabin air filtration system
Dual-zone electronic automatic temperature control
Front centre floor console with adjustable armrest and two-tiered storage
Genuine wood accents in walnut swirl or olive ash on the instrument panel and door trim
Illuminated Entry System with theatre-dimming feature
Leather-wrapped shift knob
Leather-wrapped steering wheel with genuine wood accent in walnut swirl or olive ash
Remote, power decklid release
Tilt/telescoping steering column

AUDIO | COMMUNICATION SYSTEMS

Auxiliary audio input jack in front centre floor console
Lincoln SYNC® voice-activated, in-vehicle connectivity system
Premium AM/FM audio system with 6-disc in-dash CD changer, MP3 capability and 9 speakers
SIRIUS Satellite Radio, including SIRIUS Satellite Radio receiver, low-profile antenna and 6-month prepaid subscription to SIRIUS

SAFETY | SECURITY

Personal Safety System™ for driver and front passenger with dual-stage front airbags,² safety belt pretensioners, safety belt energy-management retractors, safety belt usage sensors, driver's seat position sensor, crash severity sensor, restraint control module and Front-Passenger Sensing System
AdvanceTrac® ESC (electronic stability control) with brake-actuated traction control
Anti-theft perimeter alarm
Belt-Minder™ front safety belt reminder
Child-safety rear door locks
Emergency glow-in-the-dark, in-trunk release handle
Front-seat side airbags²
Integrated key transmitter remotes (2)
Lower anchors and tether anchors for child-safety seats (LATCH)
MyKey™ owner controls feature
Power door locks
SecuriCode™ keyless entry keypad
SecuriLock® Passive Anti-Theft Engine Immobilizer System
Side-curtain airbags² with roll-fold technology
Side-intrusion door beams
SOS Post-Crash Alert System™
Tire Pressure Monitoring System (excludes spare)

MKZ Hybrid – Includes all MKZ FWD content plus:

2.5L iVCT Atkinson-cycle engine with Permanent-Magnet AC-synchronous electric motor – 191 net hp
Electronically controlled continuously variable transmission (eCVT)
275-volt sealed nickel-metal-hydride (NiMH) battery
Estimated Fuel Consumption¹
FWD 4.6L/100 km city and 5.4L/100 km hwy. (61 mpg city/52 hwy.)
Driver's knee airbag²
Fixed rear seat
Regenerative Braking System
SmartGauge™ with EcoGuide instrument cluster with 2 configurable LCD screens and message centre

¹Fuel consumption ratings based on Transport Canada approved test methods. Actual fuel consumption may vary. ²Always wear your safety belt and secure children in the rear seat.

AVAILABLE LUXURY PACKAGES

Executive Package

Bridge of Weir leather-trimmed, heated and cooled front seats in: Dark Charcoal with Miko® Suede seat inserts and tuxedo seam, or Cashmere-coloured with leather seat inserts and tuxedo seam

Front and rear premium floor mats with Lincoln Star logo and Miko Suede edge

Genuine walnut swirl wood accents on the instrument panel and centre console

THX® II Certified 5.1 Surround Audio System

Unique door-trim inserts with accent stitching

Unique front centre console armrest insert

Voice-activated, hard drive-based Navigation System with 8-in. high-resolution display with nearly 10 gigabytes of digital storage for pictures and music

Vision Package:¹

BLIS® (Blind Spot Information System) with cross-traffic alert

Rear view camera

Voice-activated, hard drive-based Navigation System with 8-in. high-resolution display with nearly 10 gigabytes of digital storage for pictures and music

Sport Appearance Package:²

18-in. 10-spoke polished aluminum wheels

Aluminum trim on the instrument panel and front and rear doors, with leather-wrapped steering wheel

Body-colour door handles

Bridge of Weir Dark Charcoal leather-trimmed seats with Cashmere-coloured piping

Darkened headlamp treatment

Sport-tuned suspension

Unique chrome grille with accented black bars

Unique floor mats with MKZ badge

AVAILABLE EQUIPMENT

17-in. 9-spoke chrome-clad aluminum wheels

Adaptive high-intensity discharge (HID) headlamps

Engine block heater

Intelligent all-wheel drive (AWD) includes adaptive high-intensity discharge (HID) headlamps and THX II Certified 5.1 Surround Audio System

Power moonroof

THX II Certified 5.1 Surround Audio System

Voice-activated, hard drive-based Navigation System (requires THX II Certified 5.1 Surround Audio System)

AVAILABLE CUSTOM ACCESSORIES

Remote start systems

Dual Headrest DVD by INVISION™³

Wiper de-icer and debris cleaner by Wiper Shaker³

Racks and carriers by THULE®³

Hood deflector

Moonroof deflector

Side window deflectors

Splash guards

Locking fuel plug

Interior light kit

Cargo area protector and organizers

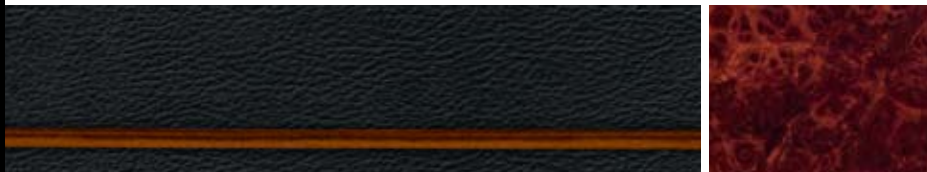
Cargo net

18-in. wheels

Length	4,824 mm (189.8 in.)	Passenger volume	
Wheelbase	2,728 mm (107.4 in.)		2,803 litres (99.0 cu. ft.)
Width (excluding mirrors)	1,834 mm (72.2 in.)	Cargo volume	
Width (including mirrors)	2,035 mm (80.1 in.)		MKZ 467 litres (16.5 cu. ft.)
Height	1,445 mm (56.9 in.)		Hybrid 334 litres (11.8 cu. ft.)
Head room (front/rear)	983 mm (38.7 in.)/960 mm (37.8 in.)	Total interior volume	
Shoulder room (front/rear)	1,453 mm (57.2 in.)/1,417 mm (55.8 in.)		MKZ 3,270 litres (115.5 cu. ft.)
Hip room (front/rear)	1,372 mm (54.0 in.)/1,359 mm (53.5 in.)		Hybrid 3,137 litres (110.8 cu. ft.)
Leg room (front/rear)	1,074 mm (42.3 in.)/932 mm (36.7 in.)		

¹Requires THX II Certified 5.1 Surround Audio System. ²Not available on MKZ Hybrid. ³Ford Licensed Accessories.

Dark Charcoal Leather trim is available with all exterior colours



DARK CHARCOAL LEATHER WITH DARK RUST PIPING | WALNUT SWIRL WOOD

Light Camel Leather trim is available with:
 Tuxedo Black Metallic
 Sterling Gray Metallic
 Steel Blue Metallic
 Bordeaux Reserve Red Metallic
 White Platinum Metallic Tri-coat
 Red Candy Metallic Tinted Clearcoat



LIGHT CAMEL LEATHER WITH AGATE PIPING | OLIVE ASH WOOD

Sport Appearance Package is available with:
 Tuxedo Black Metallic
 Sterling Gray Metallic
 Ingot Silver Metallic
 White Platinum Metallic Tri-coat
 Red Candy Metallic Tinted Clearcoat



DARK CHARCOAL LEATHER AND SEAM WITH CASHMERE-COLOURED PIPING | ALUMINUM TRIM

Executive Package Dark Charcoal Leather trim is available with:
 Tuxedo Black Metallic
 Sterling Gray Metallic
 Ingot Silver Metallic
 White Platinum Metallic Tri-coat
 Red Candy Metallic Tinted Clearcoat

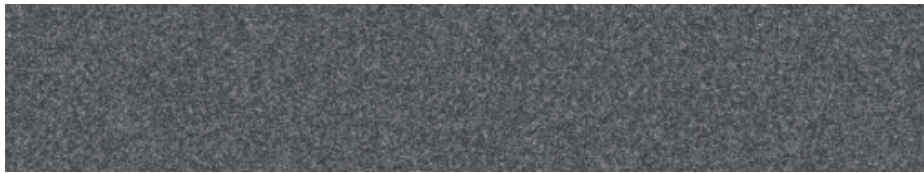


DARK CHARCOAL OR CASHMERE-COLOURED LEATHER AND SEAM | WALNUT SWIRL WOOD

Cashmere-Coloured Leather trim is available with same colours listed above plus Bordeaux Reserve Red Metallic



TUXEDO BLACK METALLIC



STERLING GRAY METALLIC



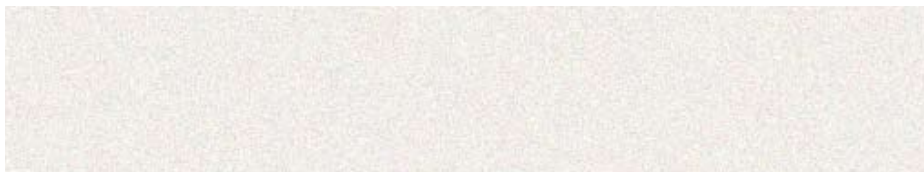
STEEL BLUE METALLIC



BORDEAUX RESERVE RED METALLIC



INGOT SILVER METALLIC



WHITE PLATINUM METALLIC TRI-COAT¹



RED CANDY METALLIC TINTED CLEARCOAT¹

¹Additional cost.
Colours are representative only.

- A. 17-IN. 9-SPOKE MACHINED ALUMINUM WITH PAINTED POCKETS | STANDARD
- B. 17-IN. 9-SPOKE CHROME-CLAD ALUMINUM | OPTIONAL
- C. 18-IN. 10-SPOKE POLISHED ALUMINUM | STANDARD WITH SPORT APPEARANCE PACKAGE



FORD CREDIT Get the ride you want. Whether you plan to lease or finance, you'll find the choices that are right for you at Ford Credit. Ask your local Ford of Canada Dealer for details or check us out at fordcredit.ca.

FORD EXTENDED SERVICE PLAN Help protect your investment and add to your peace of mind by complementing your Lincoln purchase or lease with a Ford Extended Service Plan (ESP). Ford ESP protects you against unexpected repair costs after your New Vehicle Basic Warranty expires by covering many vehicle components. Enjoy the drive even more by complementing your ESP with a prepaid maintenance plan, which covers all required scheduled maintenance for your vehicle, plus 8 wear items. See your Ford of Canada Dealer for details.

Ford of Canada warrants that its authorized Dealers will repair or replace any Genuine Ford Accessory that is properly installed by the authorized Dealer that sold the accessory and found to be defective in factory-supplied materials or workmanship. The accessory will be warranted for whichever provides you the greatest benefit: 12 months/20,000 km (whichever occurs first), or the remainder of your 48-month/80,000-km (whichever occurs first) Basic Coverage in the New Vehicle Limited Warranty. Contact your local Ford of Canada Dealer for details.

Ford Licensed Accessories (FLA) are warranted by the accessory manufacturer's limited warranty. The warranty coverage will vary by accessory manufacturer. Ford Licensed Accessories are fully designed and developed by the accessory manufacturer and have not been designed or tested to Ford Motor Company engineering requirements. Contact your local Ford of Canada Dealer for details regarding the accessory manufacturer's limited warranty and/or for a copy of the FLA product limited warranty offered by the accessory manufacturer.

Bridge of Weir is a trademark of Bridge of Weir Leather Company Limited.

THX and the THX logo are trademarks of THX Ltd., which may be registered in some jurisdictions. All rights reserved.

"SIRIUS," the SIRIUS dog logo, channel names and logos are trademarks of SIRIUS XM Radio Inc. Subscriptions governed by SIRIUS Terms and Conditions at siriuscanada.ca.

Microsoft is a registered trademark of Microsoft Corporation.

The Bluetooth word mark is a trademark of the Bluetooth SIG, Inc.

Miko is a registered trademark of Miko s.r.l.

INVISION is a trademark of Audiovox Corporation.

THULE is a registered trademark of Thule Sweden AB.

Please Note: The electronic version of this Lincoln vehicle brochure is a condensed version of the original printed version.

Competitive comparisons are based on 2010/2011 competitive models, publicly available information and Ford data at the time of printing of the 2011 original printed version. Some features discussed may be optional. Vehicles shown may contain optional equipment. Features shown may be offered only in combination with other options or subject to additional ordering requirements or limitations. Dimensions shown may vary due to optional features and/or production variability. Following publication of the 2011 original printed brochure, certain changes in standard equipment, options and the like, or product delays may have occurred which would not be included in these pages. Your Ford of Canada Dealer is your best source for up-to-date information. Ford Motor Company of Canada, Limited, reserves the right to change product specifications at any time without incurring obligations. Colours may not be exactly as illustrated. Please see your sales consultant for specific colour and model availability. Please visit your local dealer or lincolncanada.com for complete vehicle details.

For prompt, courteous answers to your questions:

Lincoln Customer Relationship Centre 800.387.9333

Ford Credit Customer Service Centre 877.636.7346

LINCOLN CUSTOMER CARE

A Comprehensive Owner Benefits Package

- New Vehicle Limited Warranty – 4 years / 80,000 km
- Corrosion Warranty – 5 years / unlimited distance
- Lincoln Roadside Assistance – 6 years / 110,000 km
- Powertrain Warranty – 6 years / 110,000 km
- No-Charge Maintenance – 1st two scheduled maintenance visits (2 years / 32,000 km)

Certain conditions apply. For more information on MKZ and other Lincoln products, or these warranties and coverages, ask your local Ford of Canada Dealer or visit lincolncanada.com.

©2010 Ford Motor Company of Canada, Limited

LINCOLN MKZ + HYBRID 2011

lincolncanada.com

