

2011 **All-New Elantra**



 **HYUNDAI™**

# 2011 Elantra

## WHAT SMART MEANS TO US.

At Hyundai, we are constantly striving to make smart decisions when it comes to our vehicles so you can make smart decisions when it comes to your purchase. A smart decision means weighing the pros and cons, evaluating the costs against the benefits, and making a choice for the right reasons for you. It means having no regrets.

Our investment in eco-friendly technologies, quality craftsmanship, extensive research and design, together with our state-of-the-art facilities and dedicated human resources, ensures our vehicles are built with integrity from the first to the final detail. And, together, they deliver on Hyundai's promise to Canadians – to create a lineup of smart vehicles.

## GIVE YOUR EXPECTATIONS A BIG, FAT RAISE.

Carmakers typically design new models by taking aim at the head of the class. At Hyundai, we set our sights higher – we aim for a class above the rest. And when you consider everything the new, completely redesigned 2011 Elantra has to offer, one word comes to mind: Bullseye.

In so many ways, the new Elantra offers more than you might expect. At a price lower than you might imagine. Sleek character lines and assertive design cues hint at an elevated performance.



# A shape inspired by nature and refined by science

**Design focused on efficiency.** A flowing sculpture seemingly carved by the wind conveys a feeling of movement, even when standing still. Aerodynamic lines gracefully arc over the rear wheels and flow into striking wraparound taillights. In every detail, Elantra stands out from the conservative designs of traditional compact cars, speaking a unique visual language inspired by the forces of wind and water.



# The art of living large

**The art of relaxed driving.** Slip behind the steering wheel, and the first thing you're likely to notice is how naturally the 6-way adjustable front seats conform to the contours of your body. As you stash your beverage and sunglasses in their seamless storage areas, watch as your eyes glide along Elantra's fluid interior lines and come to rest on a pair of large, highly legible gauges in the center of the instrument panel. A modern, ergonomically refined center console allows your fingertips to quickly locate any button or knob they desire, while available steering-wheel mounted audio and cruise controls let you keep your hands on the task of driving as you choose your tunes, select your speed...and simply go. Wherever the road leads you.



A blue Hyundai Elantra is shown from a high-angle perspective, driving on a winding road. The car's engine is visible through a transparent overlay on the hood, showing internal components. The car is moving towards the right, following the curve of the road. The background shows a blurred landscape with greenery and a white guardrail.

**An efficient performer**

**PERFORMANCE.** An engine so clean and efficient, we considered painting it green. Well, not really. But we never considered sacrificing performance for fuel economy when redesigning Elantra's powerplant, either. The Nu DOHC, 16-valve design packs more power and mid-range punch into a lighter, tighter 4-cylinder package. For 2011, we've replaced the cast iron engine block with aluminum alloy to reduce engine weight and improve fuel economy. We've also accelerated the fun factor by coupling a two-step Variable Intake System and Dual Continuously Variable Valve Timing for optimal engine response (with minimal emissions) at both low and high rpm. The ultra-efficient 148-hp engine burns fuel so cleanly that it's a certified Ultra-Low-Emission Vehicle (ULEV).

# Enough standard safety features to change the standard



**SIX STANDARD AIRBAGS\***

**SAFETY.** Six airbags. Electronic Stability Control. When you consider everything that comes standard on the new Elantra, it's clear that Hyundai places enormous value on safety. Elantra is one of the very few in its class to offer 4-wheel disc brakes with ABS on every model. You can relax, knowing that an arsenal of advanced electronics like Electronic Brake-force Distribution and Vehicle Stability Management are optimizing the car's handling in all driving conditions. Best of all, traveling with this technical entourage won't cost you a fortune.

# 2011 All-New Elantra



**Navigation System.** The all-new Elantra features a 7" LCD touchscreen and a rearview camera (Limited with Nav models).



**Power Sunroof.** Add a wide-open swath of sky to your driving experience with an available power tilt-and-slide, one-touch glass sunroof.



**Bluetooth<sup>®</sup> Hands – Free Phone System.** In addition to voice commands, Elantra's available hands-free phone system also supports hands-free audio streaming.



**1.8L D-CVVT DOHC 16V Engine.** Dual Continuously Variable Valve Timing automatically adjusts intake valve timing for maximum performance at every speed.



**Proximity Key Entry With Electronic Pushbutton Start.** Elantra Limited's available proximity key senses your presence, allowing you to unlock doors and start the engine with the push of a button.



**Heated Rear Seats.** In addition to heated front seats, the Elantra Limited comes standard with heated rear seats as well – a first within the compact car segment.



**Steering-Wheel Mounted Audio Controls.** Available fingertip control of the sound system, cruise control and Bluetooth<sup>®</sup> hands-free phone system is as intuitive as it is enjoyable.



# 2011 Elantra

**COLOURS.** Our vivid palette of exterior colours is the perfect way to complete your Elantra.  
Explore the options and choose the one that best reflects your personal style.

## EXTERIOR



Glacier White Pearl

A C



Radiant Silver

A C



Harbour Grey Metallic

A C



Desert Bronze Metallic

A B



Indigo Blue Pearl

A C



Black Noir Pearl

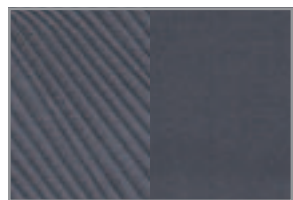
A C



Venetian Red

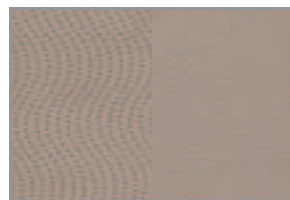
A B

## INTERIOR



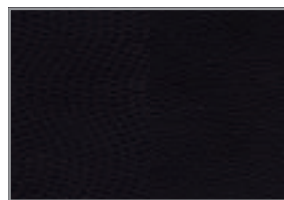
Grey Cloth Seats

A



Beige Leather Seats

B



Black Leather Seats

C

Choice of interior colour depends upon exterior colour selection. Due to print production processes, the colours shown throughout this brochure may vary slightly from the actual hue. See your dealer for model applications and to view the Hyundai Colour Selector. Visit [hyundaicanada.com](http://hyundaicanada.com) or see dealer for details.

# 2011 Elantra

**ACCESSORIES.** Hyundai is making its name by delivering unprecedented quality and value – offering Canadians a wide variety of lifestyle-friendly vehicles loaded with outstanding packages of standard features and premium extras. But your vehicle should be as individual as you. That's why Hyundai goes out of its way to offer you a line of accessories designed to suit specific demands. With Hyundai's line of authorized parts and accessories, you are able to customize and adapt your vehicle to your lifestyle. From a handy accessory frame to stylish side visors and protective rubber floor mats, custom-fit your Elantra your way.



**Cargo Tray.** Add years to the interior of your Hyundai by protecting it from spills and messy loads with a durable, custom-fit cargo tray.



**Rubber Floor Mats.** Protect the interior of your Hyundai from everyday dirt and debris with custom-made floor mats. Remove carpet mats prior to installation.



**Roof Racks.** This durable, quick-locking roof rack system lets you transport cargo easily, without sacrificing interior room. Remove when not in use.



**Mud Guard Kit.** Custom-fit mud guards keep the dirt and debris of everyday driving where it belongs.



**Plastic Hood Protector.** Prevent dents and scratches caused by road and vehicle debris with an attractive plastic hood protector.



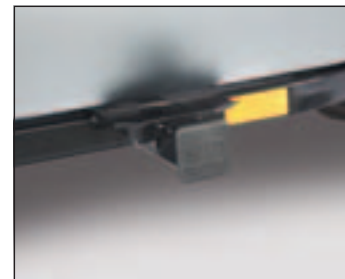
**Rear Bumper Protector.** Protect the finish on your bumper from chips and scratches – when loading and unloading the cargo area – with this durable, custom-fit rear bumper protector.



**Side Visors.** Sleek and sporty, these side visors let you enjoy fresh air even when it's raining.



**Sunroof Deflector.** Enjoy the sun? You'll enjoy it even more with the reduced wind noise that a sunroof deflector can provide.



**Accessory Frame.** An accessory frame makes it quick and easy to attach hitch-mounted cargo equipment, such as bike and ski racks. Includes end cap. Frame not intended for towing.



**Cargo Net.** A custom-fit cargo net ensures everything you're transporting remains organized and in place by preventing items from sliding around.

<sup>TM</sup>The Hyundai names, logo, product names, feature names, images and slogans are trademarks owned by Hyundai Auto Canada Corp. The XM<sup>®</sup> name is a registered trademark of XM Satellite Radio Inc. iPod<sup>®</sup> is a registered trademark of Apple Inc. All other trademarks are property of their respective owners. <sup>1</sup>The supplemental restraint (airbag) system (SRS) is designed to work with the three-point seatbelt system. The SRS deploys in certain frontal and/or side-impact conditions where significant injury is likely. The SRS is not a substitute for seatbelts, which should be worn at all times. Children under the age of 13 should be restrained securely in the rear seat. NEVER place a child seat in the front seat of a Hyundai vehicle. <sup>2</sup>Electronic Stability Control (ESC) and Traction Control System (TCS) are meant to enhance conscientious driving habits and are not a substitute for safe driving practices. <sup>3</sup>Hyundai's Comprehensive Limited Warranty coverage covers most vehicle components against defects in workmanship under normal use and maintenance conditions. <sup>4</sup>Includes fuel delivery service, flat tire changing, lock-out service, towing service and more. Just one toll-free call away. 24 hours a day. <sup>5</sup>CAN/ULC S338-98 compliant immobilizer may reduce insurance costs in some instances. <sup>6</sup>When equipped with optional navigation package, Bluetooth<sup>®</sup> Handsfree and the navigation system only recognize English voice commands. Specifications, features, illustrations, accessories, materials and equipment and all other information shown in this brochure are based on the latest information available at the time of publication. Although descriptions are believed to be correct, accuracy cannot be guaranteed. Hyundai Auto Canada Corp. reserves the right to make any changes or modifications at any time, without notice or obligation, including, without limitation, in colour, specifications, features, accessories, materials, equipment and models. Some vehicles are shown with optional equipment.

# 2011 Elantra

L GL GLS LIMITED  
With NAV

## L *Standard Equipment Includes:*

- 1.8L D-CVVT DOHC 16V Engine
- 6-Speed Manual Transmission
- 4-Wheel Disc Brakes with Anti-Lock Brake System (ABS) & Electronic Brake Force Distribution (EBD)
- 15" Steel Wheels with Covers
- Advanced Front Airbags, Front Seat-Mounted Side Airbags & Roof Mounted Curtain Airbags (6)
- AM/FM/CD/MP3 Player with 6 speakers and iPod®/USB/Auxiliary input jacks
- Vehicle Stability Management (VSM), Electronic Stability Control (ESC) with Traction Control System (TCS)
- Central Power Door Locks
- Rear Seat Centre Armrest with Cupholders
- Driver's Seat Height Adjuster
- Trip Computer
- Dual Heated Power Exterior Mirrors
- Power Windows with Driver's Auto Down
- Optional: 6-Speed Automatic Transmission with SHIFTRONIC®

## GL *Includes Elantra L Standard Equipment Plus:*

- 16" Steel Wheels with Covers
- Air Conditioning
- Keyless Entry and Alarm System
- Cruise Control
- Heated Front Seats
- Steering Wheel Audio Remote Control
- Bluetooth® Hands-free Phone System\*
- Telescopic Steering Wheel
- Optional: 6-Speed Automatic Transmission with SHIFTRONIC®

## GLS *Includes Elantra GL Standard Equipment Plus:*

- 16" Alloy Wheels
- AM/FM/XM®/CD/MP3 Player with 6 speakers and Roof-mounted XM® Antenna
- Leather-wrapped Steering wheel / Gear Shift Knob
- Heated Rear Seats
- Power Sunroof
- Key Set Illumination
- Illuminated Front Sunvisors with Driver Extension
- Fog Lights
- Optional: 6-Speed Automatic Transmission with SHIFTRONIC®

## Limited: *Includes Elantra GLS Standard Equipment Plus:*

- 6-Speed Automatic Transmission with SHIFTRONIC®
- 17" Alloy Wheels
- Power Windows with Driver's Auto Up/Down and Pinch protection
- Deluxe Sliding Center Armrest
- Leather Seating Surfaces with Leatherette Door Inserts
- Automatic Light Control
- Auto-dimming Rearview Mirror with HomeLink®
- Fully Automatic Climate Control
- Mirror-mounted Turn Signal Indicators
- Solar Control Glass

## Limited w/Nav: *Includes Elantra Limited Standard Equipment Plus:*

- 7" Touch-screen Navigation System with Rearview Camera
- AM/FM/XM®/CD/MP3 Player with 6 speakers and External Amp
- Proximity Entry with Push Button Start

## Mechanical

Engine Type	1.8L (1,797cc) I4 Dual CVT	S	S	S	S	S
Valve Train	16-valve	S	S	S	S	S
Intake System	2-step Variable Induction System + Variable Charge Motion (VCM)	S	S	S	S	S
Block/head Composition	Aluminum	S	S	S	S	S
Horsepower @ RPM	148 @ 6,500	S	S	S	S	S
Torque (ft-lbs) @ RPM	131 @ 4,700	S	S	S	S	S
Bore & Stroke (mm)	81.0 x 87.2	S	S	S	S	S
Compression ratio (:1)	10.3	S	S	S	S	S
Fuel Delivery	Multi-Point Injection (MPI)	S	S	S	S	S
Mounts	Hydraulic	S	S	S	S	S
Exhaust	Single	S	S	S	S	S
Emissions System	ULEV-II	S	S	S	S	S
Ignition System Type	Distributorless	S	S	S	S	S
Alternator Rating	13.5 V 90 A	S	S	S	S	S
Battery Rating	48 AH	S	S	S	S	S
Drive Configuration	Front Wheel Drive	S	S	S	S	S
Transmission type:	6-Speed Manual	S	S	S	-	-
	6-speed Automatic w/ OD Lockup Torque Converter, SHIFTRONIC® Manual Shift Mode	0	0	0	S	S
Brakes	Front: Disc Diameter: 280 mm	S	S	S	S	S
	Rear: Disc Diameter: 262 mm	S	S	S	S	S
	ABS w/ Electronic Brake-force distribution (EBD)	S	S	S	S	S
Brake assist		S	S	S	S	S
Parking brake	Mechanical	S	S	S	S	S
Steering Type	Rack-and-pinion	S	S	S	S	S
Motor Driven Power Steering (MDPS)	Power assisted	S	S	S	S	S
Overall ratio (:1)	14.2	S	S	S	S	S
Turns (lock to lock)	2.9	S	S	S	S	S
Turning diameter	(curb to curb, in metres) 10.6	S	S	S	S	S
Suspension	Front: MacPherson struts w/ coil springs	S	S	S	S	S
	Stabilizer bar (23 mm)	S	S	S	S	S
	Gas shock absorber (twin tube)	S	S	S	S	S
	Rear: Torsion Axle	S	S	S	S	S
	Coil spring gas shock absorber (mono tube)	S	S	S	S	S
Chassis	Unibody	S	S	S	S	S
Materials	High Tensile Steel	S	S	S	S	S
Wheels	15 x 6.0J Steel	S	-	-	-	-
	16 x 6.0J Steel	-	S	-	-	-
	16 x 6.0J Aluminum Alloy	-	-	S	-	-
	17 x 7.0J Aluminum Alloy	-	-	-	S	S
Tires	P195/65R15	S	-	-	-	-
	P205/55R16	-	S	S	-	-
	P215/45R17	-	-	-	S	S

## Dimensions (mm)

Wheelbase	2,700	S	S	S	S	S
Overall length	4,530	S	S	S	S	S
Overall width (excluded mirrors)	1,775	S	S	S	S	S
Overall height	1,435	S	S	S	S	S
Minimum ground clearance	140	S	S	S	S	S
Coefficient of drag	0.28	S	S	S	S	S
Head room	front / rear 1,017/943	S	S	S	S	S
Leg room	front / rear 1,108/842	S	S	S	S	S
Hip room	front / rear 1,359/1,339	S	S	S	S	S
Shoulder room	front / rear 1,420/1,393	S	S	S	S	S
Weights (kg)	Curb: M/T 1,207 – 1,279	S	S	S	S	S
	A/T 1,225 – 1,305	S	S	S	S	S
GVWR:	M/T 1,720	S	S	S	S	S
	A/T 1,720	S	S	S	S	S

			L	GL	GLS	LIMITED	LIMITED
							With NAV
<b>Dimensions (Continued)</b>							
Capacities (L)	Fuel tank	48	S	S	S	S	S
Volume (L)	Passenger compartment	2,707	S	S	S	S	S
	Cargo – trunk	420	S	S	S	S	S
	Total	3,127	S	S	S	S	S
<b>Fuel Economy (Litre / 100km)</b>							
City (MT/AT)		6.8/6.9	S	S	S	S	S
Highway (MT/AT)		4.9/4.9	S	S	S	S	S
<b>Exterior</b>							
Headlights w/ Escort feature			S	S	S	S	S
Automatic Headlights			–	–	–	S	S
Fog lights			–	–	S	S	S
Outside Mirrors	Power adjustable, Body colour, Heated Integrated side repeater		S	S	S	S	S
			–	–	–	S	S
Mouldings and Trim	Bumpers (front & rear): Body colour		S	S	S	S	S
	Grille: Chrome		S	S	S	S	S
	Black Chrome		–	–	–	S	S
	Door handles: Body colour		S	S	S	S	S
Tinted glass			S	S	S	S	S
Solar glass			–	–	–	S	S
Windshield shade band			–	–	S	S	S
Wipers: Front windshield	2 Speed, variable intermittent & mist		S	S	S	S	S
Sunroof	Power glass – tilt & slide		–	–	S	S	S
<b>Safety</b>							
Airbags <sup>1</sup> : Dual front, seat mounted side impact(2), Roof mounted side curtain(2)			S	S	S	S	S
Rear seats	3-Point seatbelt (ELR) 3 positions		S	S	S	S	S
LATCH Lower Anchor (2 rear) and Tether for Children			S	S	S	S	S
Power window lock-out button			S	S	S	S	S
Child safety locks (rear)			S	S	S	S	S
Anti-lock braking system (ABS) w/ electronic brake-force distribution (EBD)			S	S	S	S	S
Brake assist			S	S	S	S	S
Vehicle Stability Management (VSM), Electronic Stability Control system (ESC) <sup>2</sup> w/ Traction Control System (TCS)			S	S	S	S	S
Energy-absorbing steering column			S	S	S	S	S
Front & rear crumple zones			S	S	S	S	S
Hood buckling creases & safety stops			S	S	S	S	S
Body side reinforcements			S	S	S	S	S
Ignition immobilizer system			S	S	S	S	S
Anti-theft system integrated w/ Remote Keyless Entry and Panic alarm			–	S	S	S	S
<b>Interior</b>							
Capacity	Five		S	S	S	S	S
Seating surfaces	Premium Cloth		S	S	S	–	–
	Leather		–	–	–	S	S
Front seats	6-way adjustable driver seat w/adjustable head restraint		S	S	S	S	S
	4-way adjustable passenger seat w/ adjustable head restraint		S	S	S	S	S
	Driver's seat height adjuster (pump device)		S	S	S	S	S
	Front passenger seatback pocket		S	S	S	S	S
	Heated seats and back		–	S	S	S	S
Rear seats	60/40 Split-folding rear seatback w/ head restraints (3)		S	S	S	S	S
	Seat folding release in trunk		S	S	S	S	S
	Centre adjustable armrest w/ cupholders		S	S	S	S	S
	Heated seats		–	–	S	S	S
Audio: Head unit & speakers	172-Watt (43W x 4 channels) AM/FM/CD/MP3 Audio system		S	S	S	S	S
	XM <sup>®</sup> Satellite Radio		–	–	S	S	S
	360-Watt (45W x 8 channels) 7" Navigation system with High-resolution Touchscreen and rearview camera, AM/FM/XM <sup>®</sup> /CD/MP3 Audio system with external amp		–	–	–	–	S
	2 Front door, 2 Rear, 2 Tweeters		S	S	S	S	S
	iPod <sup>®</sup> /USB auxiliary input jacks		S	S	S	S	S

			L	GL	GLS	LIMITED	LIMITED
							With NAV
<b>Interior (Continued)</b>							
Antenna	In-glass AM/FM antenna		S	S	S	S	S
	Roof-mounted XM <sup>®</sup> antenna (body colour)		–	–	S	S	S
	Speed-sensitive automatic volume control		S	S	S	S	S
Door trim	Cloth inserts		–	–	S	–	–
	Leatherette inserts		–	–	–	S	S
Door pockets	Map & Bottle holders (FRT & RR)		S	S	S	S	S
Sun visors	Driver & passenger vanity mirror		S	S	S	S	S
	Illuminated with driver extension		–	–	S	S	S
Shift knob	Urethane		S	S	–	–	–
	Leather wrapped		–	–	S	S	S
Air conditioning	A/C pre-wiring		S	–	–	–	–
	Manual temperature control		–	S	–	–	–
	Automatic temperature control		–	–	–	S	S
Rear window defroster	Electronic w/ timer		S	S	S	S	S
Heater	w/ Rear seat heater ducts		S	S	S	S	S
Steering wheel	Urethane		S	S	–	–	–
	Leather wrapped		–	–	S	S	S
	Tilt		S	S	S	S	S
	Telescoping		–	S	S	S	S
	Audio controls (volume, seek, mode)		–	S	S	S	S
	Cruise control		–	S	S	S	S
	Bluetooth <sup>®</sup> Hands-free Phone system with Voice Recognition <sup>®</sup>		–	S	S	S	S
Meters/gauges	Speedometer		S	S	S	S	S
	Tachometer		S	S	S	S	S
	Fuel level, Odometer, Trip odometer		S	S	S	S	S
	External temperature display		S	S	S	S	S
Trip computer			S	S	S	S	S
Cruise control	(Steering wheel mounted)		–	S	S	S	S
Power windows			S	S	S	S	S
	Driver's auto-down		S	S	S	S	S
	Driver's auto-up with pinch protection		–	–	–	S	S
Power door locks	2-turn unlock, inside handle override		S	S	S	S	S
Remote keyless entry system w/ alarm, panic & remote trunk release			–	S	S	S	S
Remote releases	Hood, Trunk lid, Fuel filler door		S	S	S	S	S
Console storage box w/ cover			S	S	S	S	S
Front center console	Fixed armrest storage box		S	S	S	–	–
	Sliding armrest storage box		–	–	–	S	S
Sunglass holder			S	S	S	S	S
Cup holders, dual	Front centre console-mounted		S	S	S	S	S
Rear center armrest w/ cup holders			S	S	S	S	S
12-Volt outlet (2)			S	S	S	S	S
Assist grips (3)			S	S	S	S	S
Rear coat hanger (1)			S	S	S	S	S
Inside rear view mirror	Manual day/night		S	S	S	S	S
	Auto-dimming w/ HomeLink <sup>®</sup>		–	–	–	S	S
Proximity key w/ Push-button Start			–	–	–	–	S
Front map lights			S	S	S	S	S
Central dome light (w/ Delay)			S	S	S	S	S
Cargo area light			S	S	S	S	S
Illuminated ignition key cylinder surround			–	–	S	S	S
<b>Standard Warranty</b>							
Coverage	One of Canada's best warranties						
	5-year/100,000 km Comprehensive Limited Warranty <sup>†</sup>		S	S	S	S	S
	5-year/100,000 km Powertrain Warranty		S	S	S	S	S
	3-year/Unlimited km Roadside Assistance Program <sup>††</sup>		S	S	S	S	S
0 = Optional	S = Standard	– = Not Available					

## SMART.

Everything we do at Hyundai is with smart in mind. Whether it's designing cars to fit your changing lifestyle, or building cars awarded for being some of the most stylish, reliable, dependable, and efficient on the road today – it all comes back to smart. At Hyundai, we know it's not just what we build, but how we build it. That means never cutting corners, and demanding only the highest quality not just for you, but also for our planet. Because in the end, it all comes down to helping you live smart.

[hyundaicanada.com](http://hyundaicanada.com)

